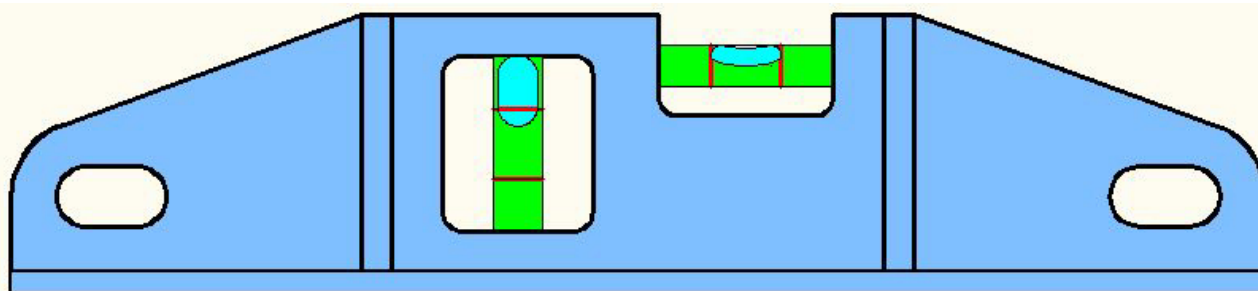


Livella in 2D

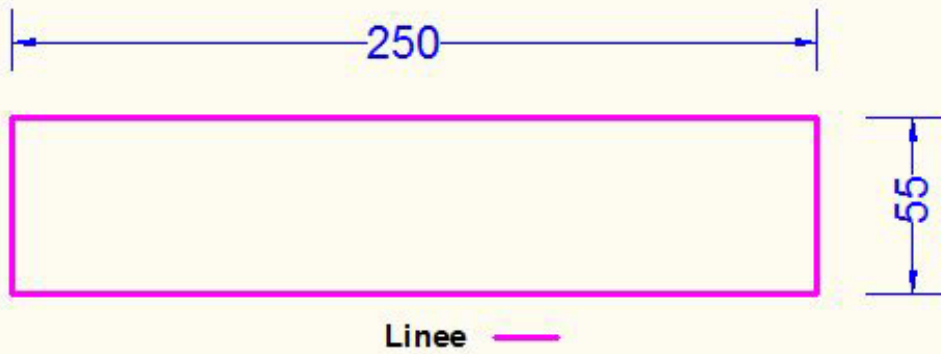
VISTA FRONTE



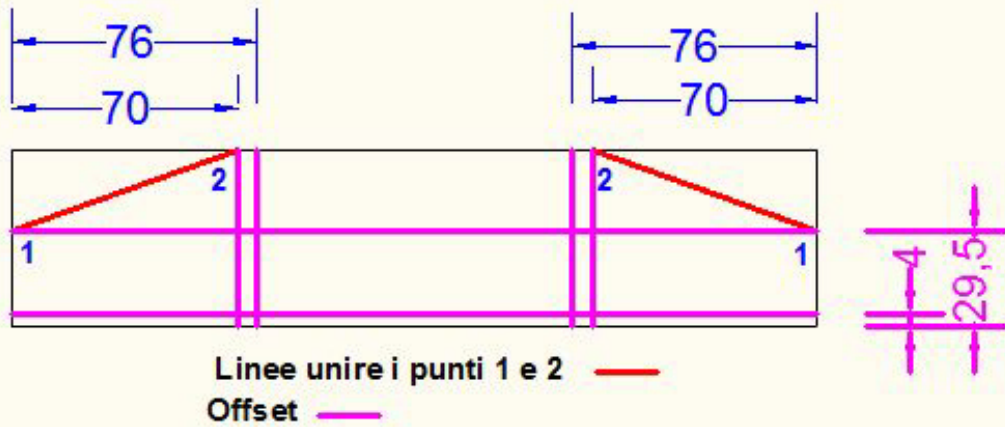
Livella in 2D

VISTA FRONTE – Scala 1:1

01



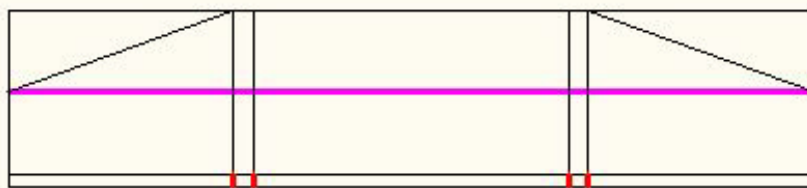
02



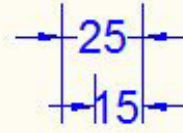
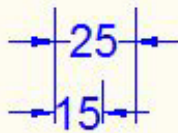
Livella in 2D

VISTA FRONTE – Scala 1:1

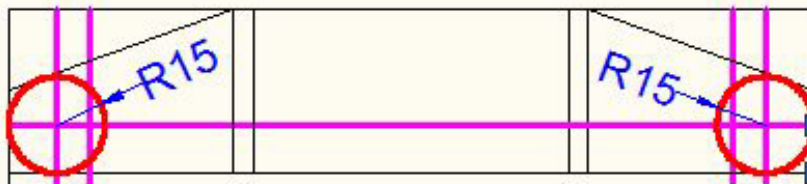
03



Cancella 
Taglia 



04

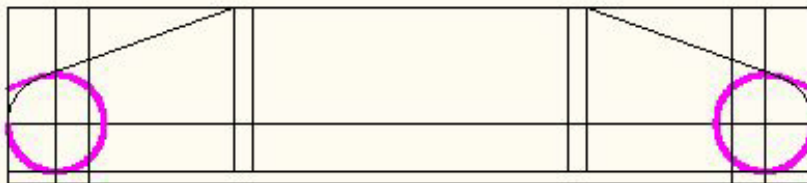


Offset 
Cerchi 

Livella in 2D

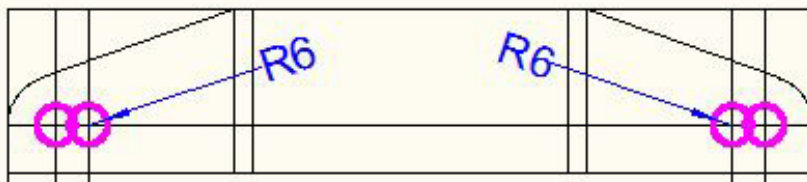
VISTA FRONTE – Scala 1:1

05



Taglia —

06

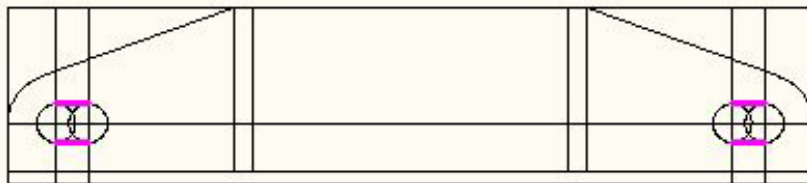


Cerchi —

Livella in 2D

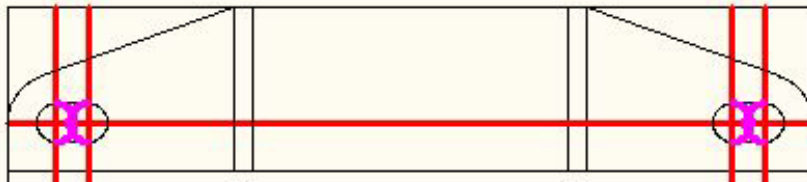
VISTA FRONTE – Scala 1:1

07



Linee —

08

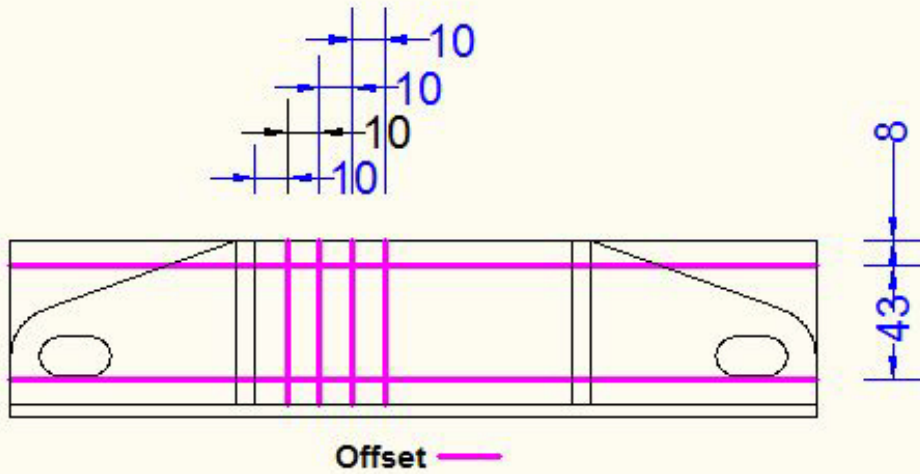


Tagliare —
Cancellare —

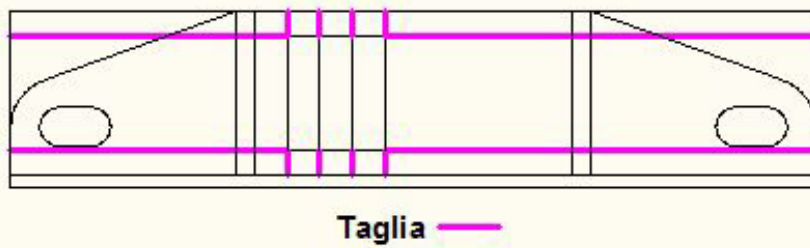
Livella in 2D

VISTA FRONTE – Scala 1:1

09



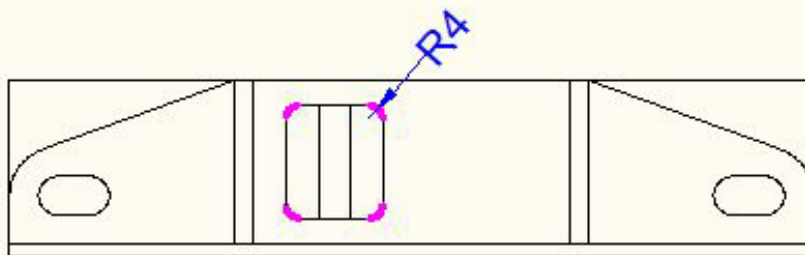
10



Livella in 2D

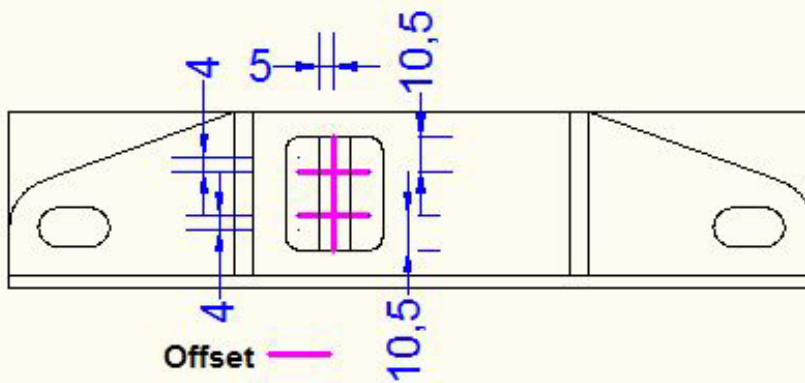
VISTA FRONTE – Scala 1:1

11



Raccora R 4

12

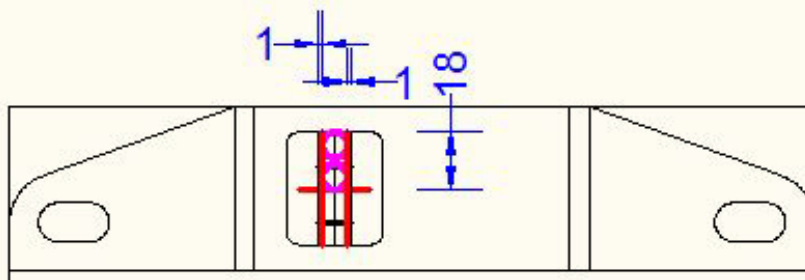


Offset

Livella in 2D

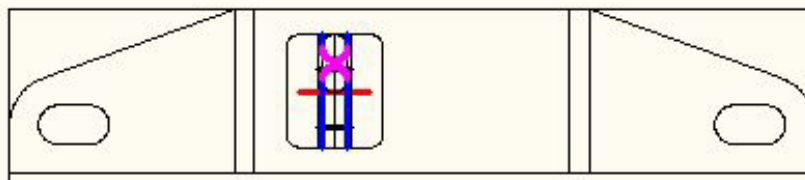
VISTA FRONTE – Scala 1:1

13



Cerchi Ttr ———
Offset ———

14

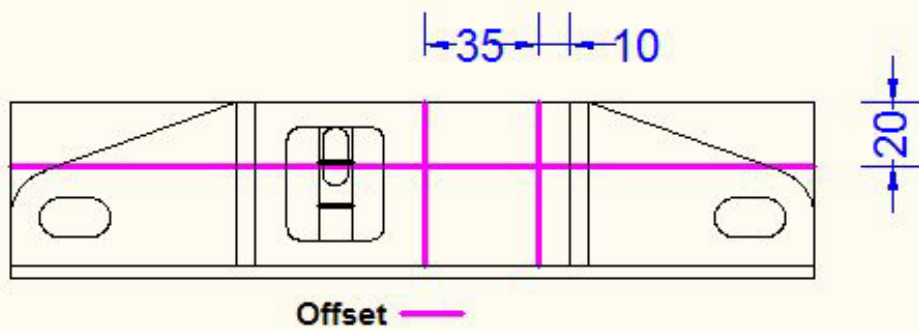


Cerchio Ttt ———
Taglia ———
Cancella ———

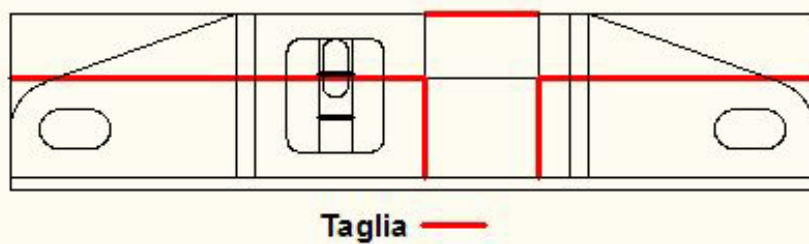
Livella in 2D

VISTA FRONTE - Scala 1:1

15



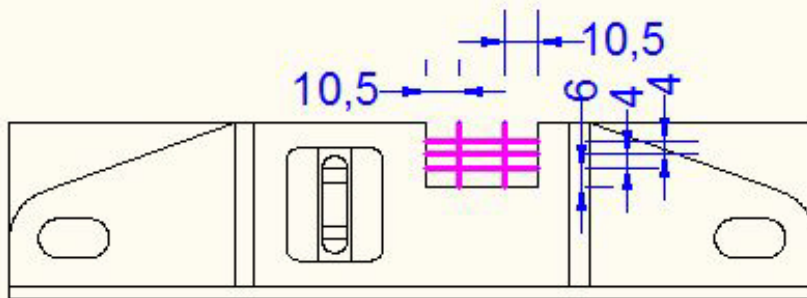
16



Livella in 2D

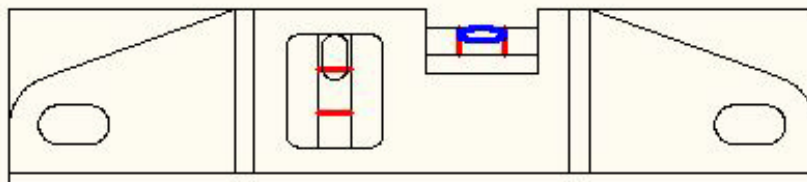
VISTA FRONTE - Scala 1:1

17



Offset —

18

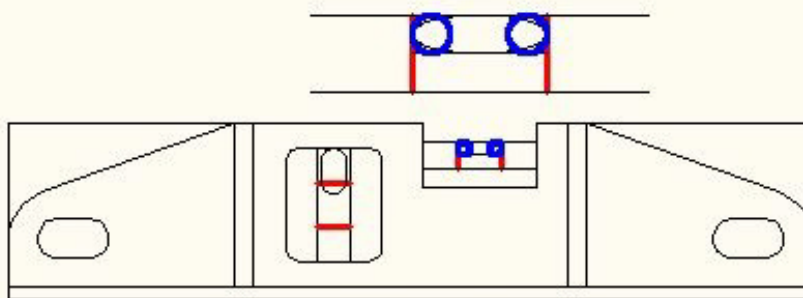


Ellisse —

Livella in 2D

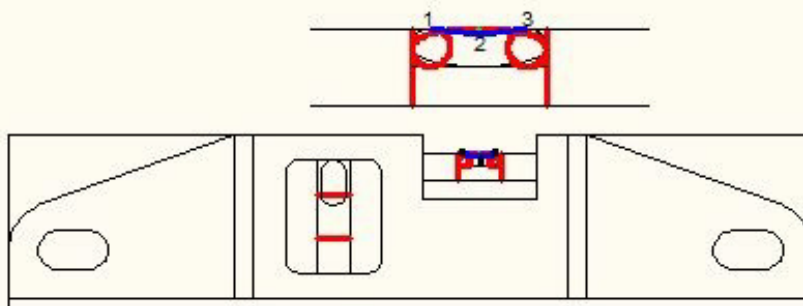
VISTA FRONTE – Scala 1:1

19



Cerchio Ttr —

20

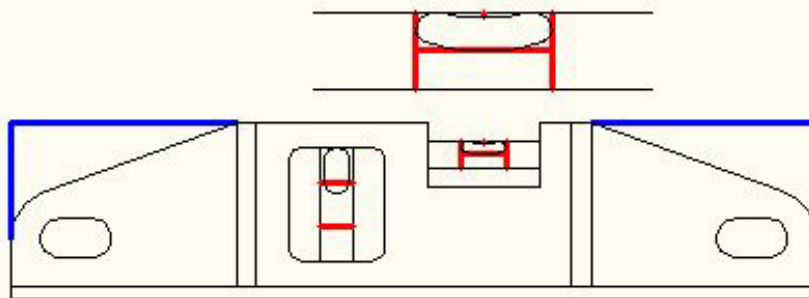


Taglia —
Linea —
Arco 3punti —

Livella in 2D

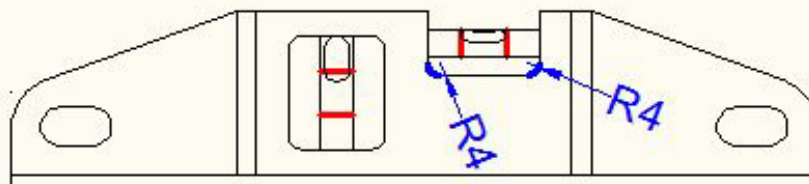
VISTA FRONTE – Scala 1:1

21



Taglia ————
Cancella ————

22

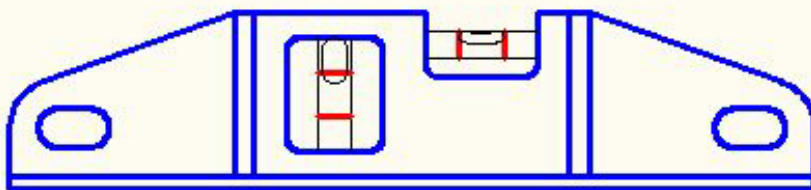


Raccorda R4 ————

Livella in 2D

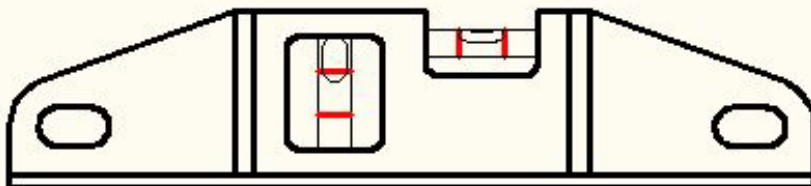
VISTA FRONTE – Scala 1:1

23



Calcare le linee con lo spessore 0.30 

24

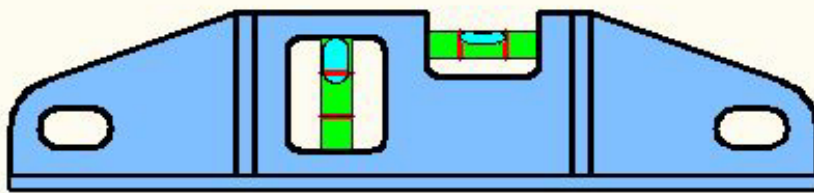


Colorare a piacimento

Livella in 2D

VISTA FRONTE – Scala 1:1

25



Risultato finale